

Industry & Partnerships Strategy

NIHR | Manchester Biomedical Research Centre

NHS
Manchester University
NHS Foundation Trust

MANCHESTER
1824
The University of Manchester



Innovation and Partnerships team



Rick Body
BRC Industry Lead



Colette Inkson
Innovation & Partnerships
Operational Lead



Katie Baker
Partnerships
Manager



Ruth Savory
Innovation
Project Officer

INDUSTRY + BRC

The NIHR Manchester BRC **embeds industry** in its approach because:



The impact of innovations on health & care is driven by successful commercialisation



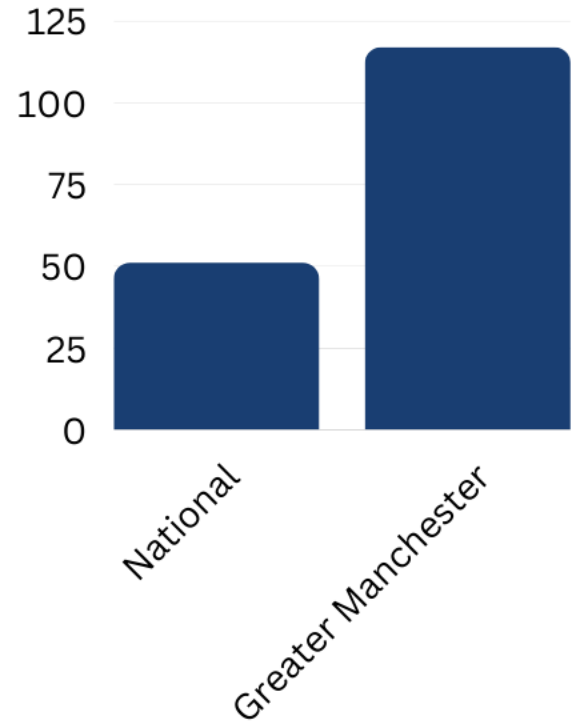
Effective partnerships with industry drive economic growth and further investment, multiplying the impact of NIHR funding



Co-design by all stakeholders is most likely to produce technologies that are fit for purpose in the NHS

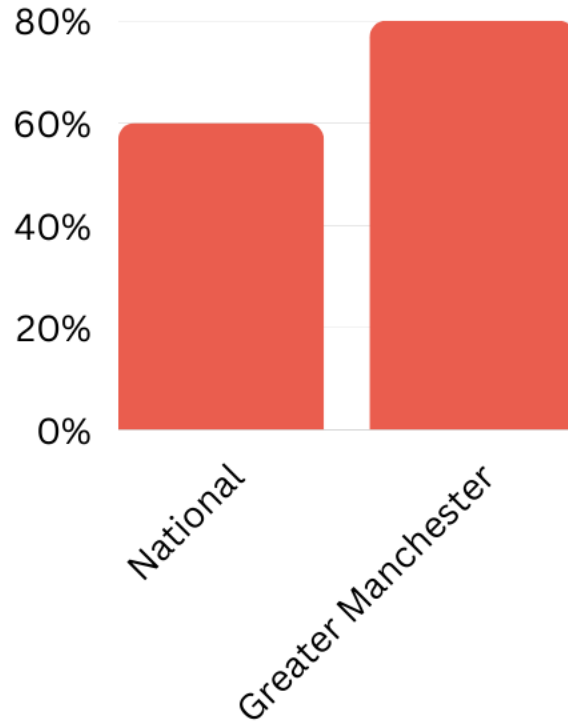


The O'Shaughnessy Report



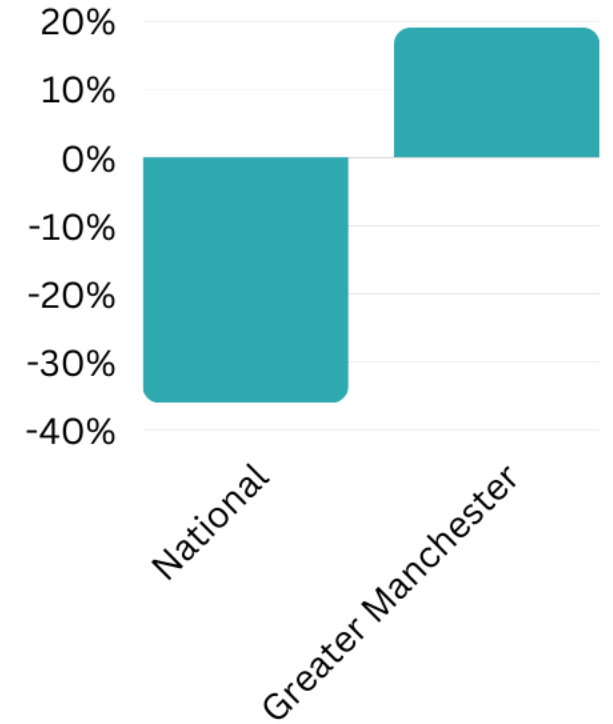
Setup times for commercial research

Since 2019



Delivery to time & target

Past 10 years



Participant recruitment

Past 6 years

Innovation Campus & District



CityLabs



**Manchester
Science
Partnerships**



Alderley Park



**Innovation
District**

NIHR | Manchester Biomedical Research Centre

NIHR | Manchester Clinical Research Facility

NIHR | Clinical Research Network Greater Manchester

NIHR | Applied Research Collaboration Greater Manchester

NHS

Manchester University
NHS Foundation Trust

NHS

Greater Manchester Mental Health
NHS Foundation Trust

NHS

Northern Care Alliance
NHS Foundation Trust

NHS

The Christie
NHS Foundation Trust

NHS

Lancashire Teaching Hospitals
NHS Foundation Trust

NHS

Blackpool Teaching Hospitals
NHS Foundation Trust

MANCHESTER
1824

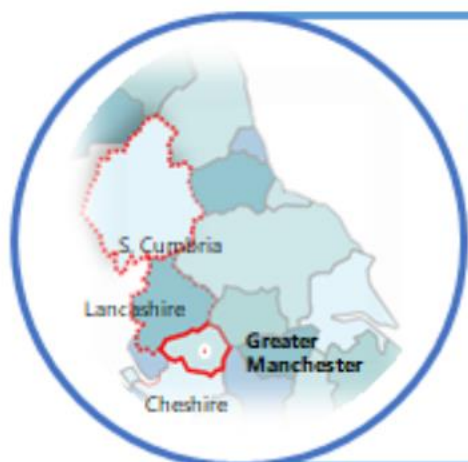
The University of Manchester

University of Manchester Innovation Factory



MSP MANCHESTER SCIENCE PARTNERSHIPS

Health Innovation Manchester



NIHR

North West CRF Alliance

Manchester CRF

Liverpool & Alder Hey CRFs

Lancashire CRF

National Patient Recruitment Centre Blackpool

Northern BRC Alliance

Manchester BRC

Leeds BRC

Sheffield BRC

Newcastle BRC

biobank

CATAPULT
Medicines Discovery

nhsa
A Health Partnership for Northern England

NORTHERN GRITSTONE
THE VALUE OF IDEAS



NIHR

National NIHR Partners

Guy's and St Thomas' BRC

Oxford Health BRC

Cambridge BRC – *BioResource*

NIHR Health Informatics Collaborative

NIHR TRCs – *MSK, Oncology, Respiratory*

Polygenic Risk Score (PRS) Initiative

VERSUS ARTHRITIS

CANCER RESEARCH UK

British Heart Foundation

HDRUK
Health Data Research UK

The AHSN Network

QUEEN'S UNIVERSITY BELFAST



MORNINGSIDE VENTURES

KENYATTA UNIVERSITY TEACHING, REFERRAL & RESEARCH HOSPITAL

THE UNIVERSITY OF MELBOURNE

UNIVERSITY OF TORONTO

SIEMENS

AVROBIO

Orchard therapeutics

Roche

GE Healthcare

Our Partnership Strategy



Entrepreneurial
work force



Collective impact



Commercialisation

Entrepreneurial Work Force

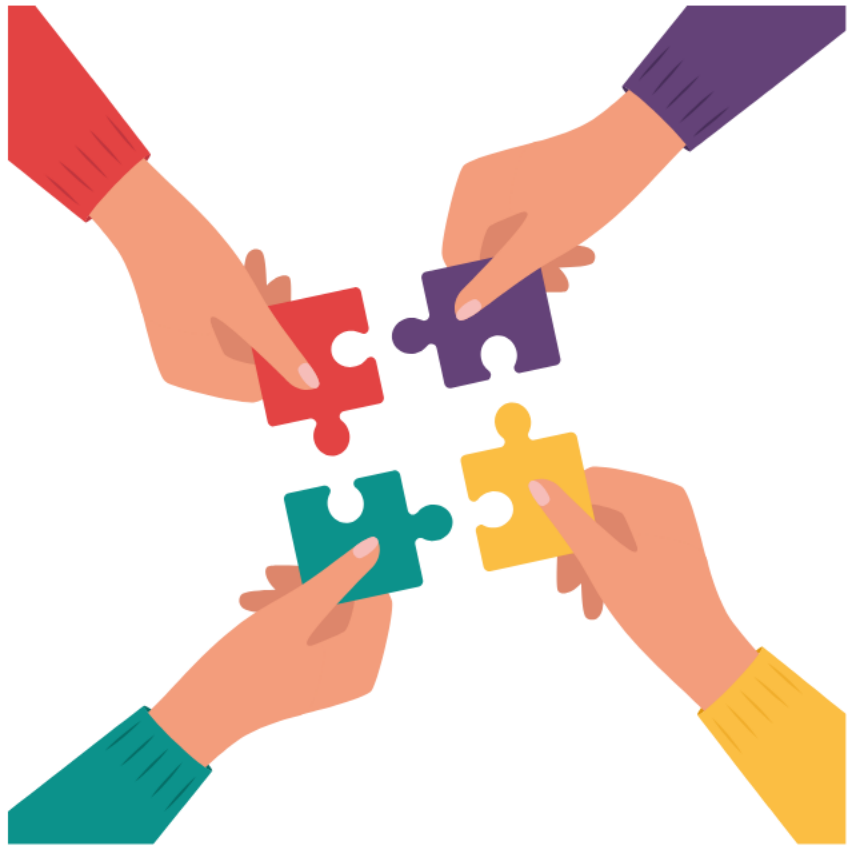
Training

- New Innovator Training Scheme
- Enhanced focus on translation/impact realisation
- Placements - co-funded PhDs, knowledge exchange

Collective Impact



Collective impact



Co-development

- Collective impact forums
 - Grand challenges
 - Pump-priming calls
-

QIAGEN-MFT-UoM Partnership



- CityLabs 2.0: **European Centre of Excellence for Precision Medicine**

Collaboration & Co-development

- Predictive Biomarkers
- Infectious Diseases and Inflammation
- Integrating Multi-omics

Town Hall style sessions

Wider Health Implications of HPV - Chair Emma Crosbie
(March 30th 2023)

Pan-Cancer panels - Chair Matt Krebbs
(May/June 2023)

Commercialisation



**Ensure our research is
commercially relevant**



**Identify investment &
licensing opportunities**

A background image showing a grid of MRI brain scans in shades of blue. In the foreground, a person's hands are holding a tablet computer. The tablet screen displays a grid of smaller MRI scans. The text 'THANK YOU!' is overlaid in the center in a glowing, pinkish-red font.

THANK YOU!